

# FLANGED TYPE L PORT 3 WAYS BALL VALVE PN16 FULL BORE BS 5241 L

Ref. : BS 5241L pas

Rev. : Initial

Date : 16/10/2013



PA Ventiler AB

GO WITH OUR FLOW

## APPLICATION

General use : Chemical industries, petrochemical industries, hydraulic installation, heating, water distribution, compressed air.

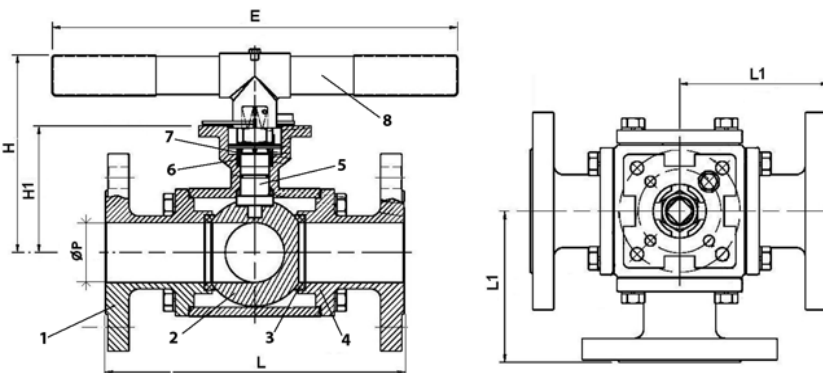
## GENERAL CHARACTERISTICS

From DN25 to DN150.  
Full bore  
Anti blow-out stem  
PTFE seat filled with glass  
Locking device  
ISO 5211 mounting pad  
Tightness on 3 ways L port.  
Trunnion mounted ball valve from DN100 to DN150



## CONSTRUCTION

|             |                    |  |
|-------------|--------------------|--|
| 8           | Handle             | SS 304 ( DN25-40)<br>Steel (DN 50 - 150) |
| 7           | Gland packing      | PTFE filled with 25% grafoil             |
| 6           | Packing            | PTFE                                     |
| 5           | Stem               | SS 304                                   |
| 4           | End                | ASTM A216 WCB                            |
| 3           | Seat               | PTFE filled with 15% glass               |
| 2           | Ball               | ASTM A351 CF8                            |
| 1           | Body               | ASTM A216 WCB                            |
| <b>Pos.</b> | <b>Description</b> | <b>Materail</b>                          |



## DIMENSIONS

| DN  | ØP    | L   | L1    | E     | H   | H1     | H2        | Weight (kg) |
|-----|-------|-----|-------|-------|-----|--------|-----------|-------------|
| 25  | 1"    | 25  | 185   | 92,5  | 218 | 102    | 64        | 7,5         |
| 32  | 1"1/4 | 32  | 195   | 97,5  | 235 | 118,5  | 79        | 10,9        |
| 40  | 1"1/2 | 38  | 232   | 116   | 235 | 127    | 88,5      | 14,9        |
| 50  | 2"    | 49  | 253   | 126,5 | 300 | 156,6  | 105,8     | 19          |
| 65  | 2"1/2 | 64  | 278   | 139   | 300 | 168,85 | 117,3     | 23,75       |
| 80  | 3"    | 76  | 292,2 | 146,1 | 300 | 178    | 128       | 34,5        |
| 100 | 4"    | 99  | 360   | 180   | 600 |        | 123 193   | 67,4        |
| 125 | 5"    | 125 | 416   | 208   | 600 |        | 163 233   | 95          |
| 150 | 6"    | 150 | 473   | 236,5 | 800 |        | 188,5 266 | 124         |

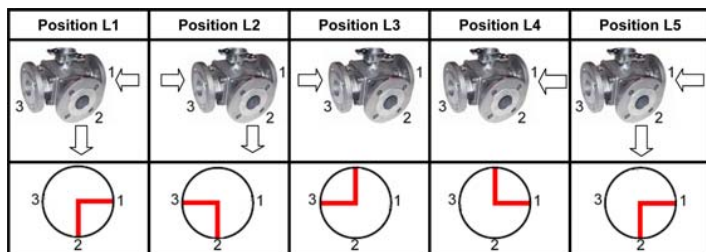
## WORKING CONDITIONS

Maximum working temperature : -20°C / + 150°C  
Maximum working pressure : 16 bar

## STANDARDS

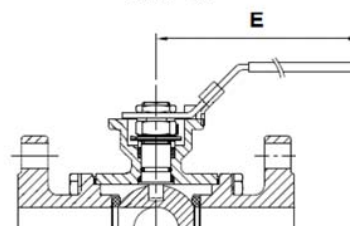
Fabrication according to ISO 9001 : 2008.  
Tests according to EN 12266-1, Range A.  
Flanges R.F. ISO PN16 according to EN 1092-1.  
ISO 5211 mounting pad.

## Operating positions

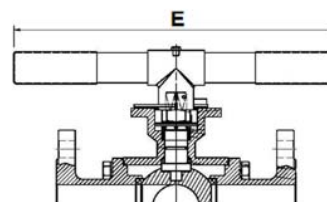


## Handle types

DN 25 - 40



DN 50 - 80



DN 100-150

