

# WAFER TYPE AXIAL CHECK VALVE PN 16 CA 7442

Ref. : CA 7442.pas

Rev. : A

Date : 30/10/2014



PA Ventil AB

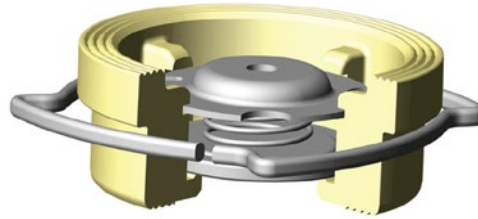
GO WITH OUR FLOW

## APPLICATION

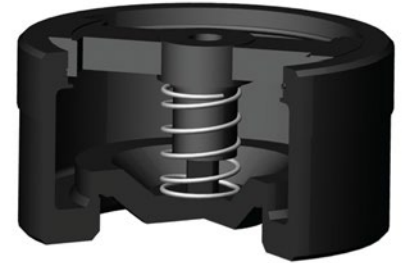
General uses : heating system industry  
corrosif fluid, high pressure, high temperature,  
chemicals pumping, thermal fluid, irrigation,  
gas, water conveyance, steam.

## GENERAL CHARACTERISTICS

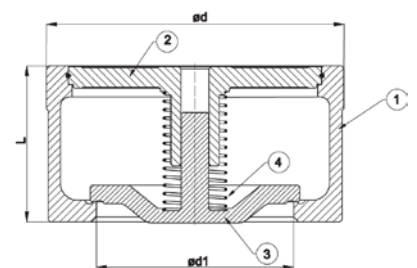
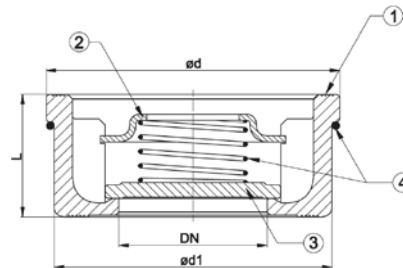
Range : from DN 32 to DN 200.  
Short dimension.  
Excellent hydraulic result.  
High performance pressure and temperature.  
Between flange assembling.  
Mounting and functioning in horizontal and  
vertical position. Low head loss.  
Do not cause water hammer.



Type 1



Type 2



## CONSTRUCTION

Pos.	Qty.	Description	Material	
4	1	Guide	Stainless steel Ductile iron GGG50	DN 32-100 DN 125-200
3	1	Spring	Stainless steel	
2	1	Disc	Stainless steel Ductile iron GGG50	DN 32-100 DN 125-200
1	1	Body	Brass Ductile iron GGG50	DN 32-100 DN 125-200

## DIMENSIONS

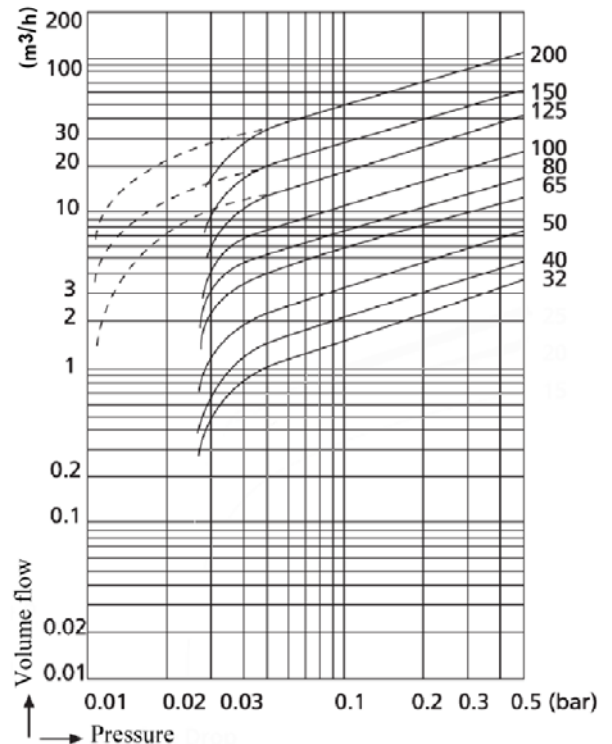
DN	32	40	50	65	80	100	125	150	200
L	28	31,5	40	46	50	60	90	106	140
Ø d	72	82	95	115	132	152	184	209	264
Ø d1	67	78	90	108	124	144	112	132	175
Weight (kg)	0,46	0,62	0,98	1,36	2,08	3,03	6,80	10,00	20,00
TYPE	Type 1						Type 2		

## WORKING CONDITIONS

PS max : 16 bar  
TS mini/maxi : -10 / +120°C

## STANDARDS

Test procedures are established according to standard EN 12266-1, DIN 3230, BS 6755 and ISO 5208.  
Face to face according to standards NF EN 558-1 serie 49 and DIN 3202/3 serie K4.  
Wafer type connections PN 16 according to standards EN 1092-2, DIN 2501, BS 4504 and ASA B16.1 Class125 |



The photographs and technical art works are not contractual. The specifications of the presented products are open to modifications without previous advice.