

# THREADED TYPE SWING CHECK VALVE PN 10 CB 1102

Ref. : CB 1102 pas

Rev. : Initial

Date : 22/10/2013



PA Ventil AB

GO WITH OUR FLOW

## APPLICATION

General use: For all common fluids.

## GENERAL CHARACTERISTICS

From DN3/8" to DN 4".

Vertical position with ascendant fluid or horizontal position.

The flow direction is indicated by the arrow on the body.

Cylindric threaded female BSP ends.

Swing type.

Tightness : EPDM from DN3/8" to DN2";

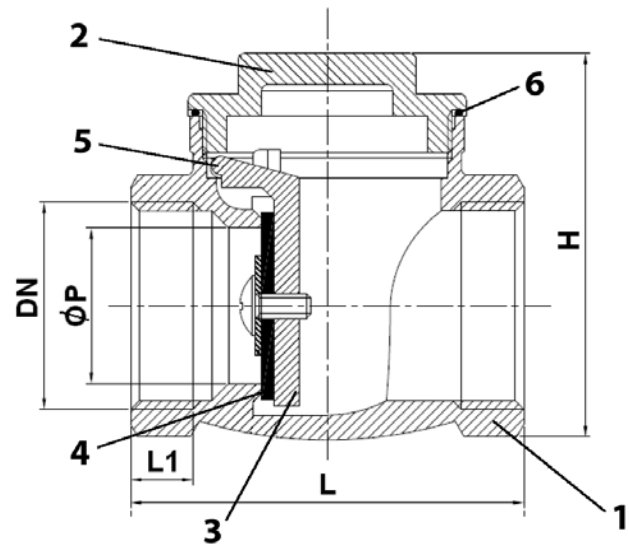
NBR from DN2"1/2 to DN4".

## CONSTRUCTION

6	Bonnet gasket	EPDM - from DN3/8" to DN2" NBR - from DN2"1/2" to DN4"
5	Stem	Brass CW 614 N according to EN 12164
4	Seat	EPDM - from DN3/8" to DN2" NBR - from DN2"1/2" to DN4"
3	Disc	Brass CW 617 N according to EN 12165
2	Bonnet	Brass CW 617 N according to EN 12165
1	Body	Brass CW 617 N according to EN 12165
Pos.	Description	Material

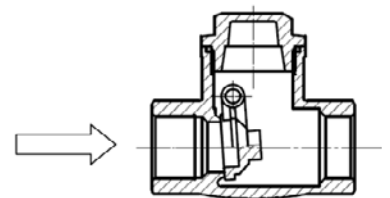
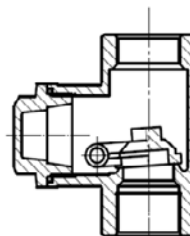
## DIMENSIONS

DN		ØP	L	L1	H	Weight (kg)
mm	inch					
10	3/8"	10	47	8	46	0,182
15	1/2"	15	47	8	46	0,158
20	3/4"	20	53	8	51	0,231
25	1"	25	63	10	61	0,370
32	1"1/4	33	74	10	73	0,554
40	1"1/2	37	87	10	85	0,726
50	2"	47	97	11	94	1,268
65	2"1/2	55	116	16	113	1,579
80	3"	68	135	16	133	2,253
100	4"	88	164	20	166	3,837



Vertical position (ascendant fluid)

Horizontal position



## WORKING CONDITIONS

Maximum working temperature : 0°C / +60°C

Maximum working pressure : 10 bar

## STANDARDS

Threaded female BSP cylindric ends.

