

# WAFER TYPE DUAL PLATE CHECK VALVE CB 6442

Ref. : CB 6442.pas

Rev. : I

Date : 18/12/2015



PA Ventil AB

GO WITH OUR FLOW

## APPLICATION

General use : Chemical and pharmaceutical industries, petrochemical industries, hydraulic installation.

## GENERAL CHARACTERISTICS

Range : from DN 50 to DN 600.  
Vulcanized gasket. Hoisting eye from DN200 to DN600.  
Anticorrosion stainless steel spring. PTFE bushing.  
Weak head loss. Vertical position with ascendant fluid or horizontal position ( respect the flow direction indicated by the arrow ) Between flanges PN10/16 or PN25.

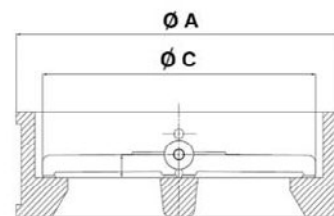
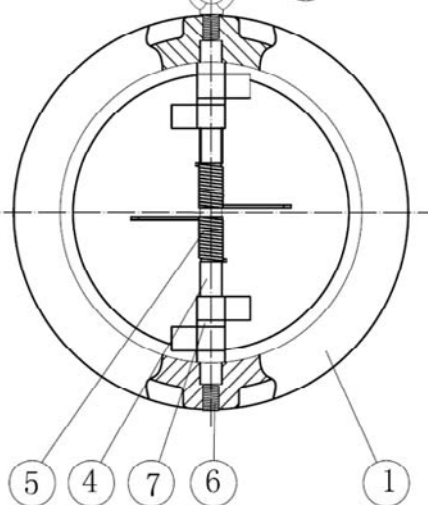
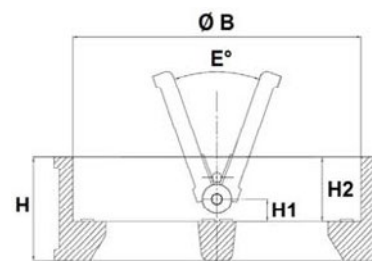
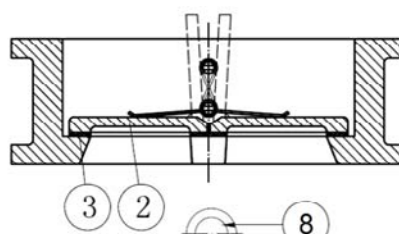
## CONSTRUCTION

|             |                    |                           |
|-------------|--------------------|---------------------------|
| 8           | Hoisting eye       | Stainless steel 304       |
| 7           | Spacer             | PTFE                      |
| 6           | Screw              | Stainless steel 316       |
| 5           | Spring             | Stainless steel 316       |
| 4           | Shaft              | Stainless steel 316       |
| 3           | Seat               | FKM                       |
| 2           | Plate              | Stainless steel ASTM A351 |
| 1           | Body               | Stainless steel ASTM A351 |
| <b>Pos.</b> | <b>Description</b> | <b>Material</b>           |



## DIMENSIONS

| DN  |        | H   | H1   | H2    | A   | B     | C     | E°  | Weight (kg) |
|-----|--------|-----|------|-------|-----|-------|-------|-----|-------------|
| mm  | inch   |     |      |       |     |       |       |     |             |
| 50  | 2"     | 54  | 14,4 | 43    | 109 | 70,5  | 60,5  | 0°  | 1,84        |
| 65  | 2 1/2" | 54  | 16,9 | 43    | 129 | 83,5  | 75,8  | 0°  | 2,4         |
| 80  | 3"     | 57  | 19,9 | 45    | 144 | 91,5  | 80,5  | 0°  | 3,35        |
| 100 | 4"     | 64  | 21   | 47    | 170 | 115,5 | 104,5 | 0°  | 5,05        |
| 125 | 5"     | 70  | 22,3 | 51    | 196 | 142,5 | 130,3 | 0°  | 6,68        |
| 150 | 6"     | 76  | 22,5 | 54    | 226 | 169,5 | 155,9 | 0°  | 9,6         |
| 200 | 8"     | 95  | 28   | 69    | 285 | 220,5 | 201,2 | 0°  | 18,07       |
| 250 | 10"    | 108 | 34   | 71    | 330 | 275,5 | 257,2 | 0°  | 26,9        |
| 300 | 12"    | 144 | 37   | 100   | 380 | 325,5 | 303,3 | 0°  | 38,9        |
| 350 | 14"    | 184 | 35   | 120   | 440 | 356   | 345,9 | 20° | 80          |
| 400 | 16"    | 191 | 37,5 | 123   | 491 | 406   | 388,6 | 20° | 106         |
| 450 | 18"    | 203 | 42,2 | 122,6 | 541 | 467   | 431,2 | 20° | 128         |
| 500 | 20"    | 213 | 39,5 | 132   | 596 | 514   | 486,8 | 25° | 158         |
| 600 | 24"    | 222 | 48,5 | 138,5 | 698 | 616   | 607,6 | 25° | 225         |



## WORKING CONDITIONS

Maximum working pressure : 16 bar from DN50 to DN300.  
10 bar from DN350 to DN600.

Maximum temperature : -10°C / +180°C.

## STANDARD

Fabrication according to ISO 9001 : 2008  
DIRECTIVE 2014/68/UE Risk Category III module H  
Desingning according to API 594  
Pressure tests according to API 598, table 6  
face to face in accordance with EN 558 Serie 50  
Connection between flanges EN 1092-1:  
PN25 from DN50 to DN200 and  
PN10/16 from DN250 to DN600.

