

# RUBBER EXPANSION JOINT BSPT FEMALE THREADED

## DI 7140 N

Ref. : DI7140N

Rev. : A

Date : 25/08/2015



PA Ventiler AB

GO WITH OUR FLOW

### APPLICATION

Expansion joint.

### GENERAL CHARACTERISTICS

EPDM rubber bellow  
Female cast iron 3 pieces BSPT threaded union ends.

Movement:

- Axial compression,
- Axial elongation,
- Lateral movement.

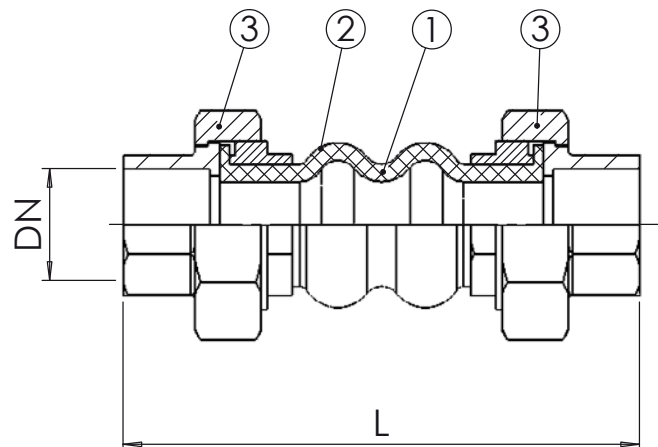
### CONSTRUCTION

3	2	Union	Malleable iron
2	1	Reinforcement	Nylon tyre cord
1	1	Bellow	EPDM rubber
Pos.	Qty.	Description	Material

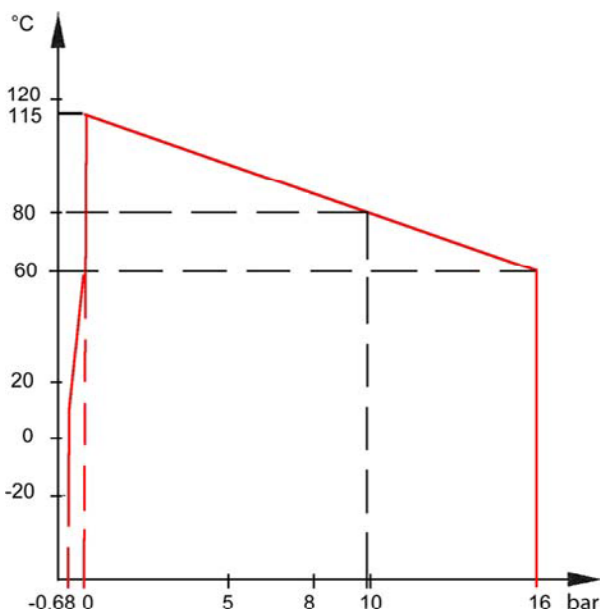


### DIMENSIONS

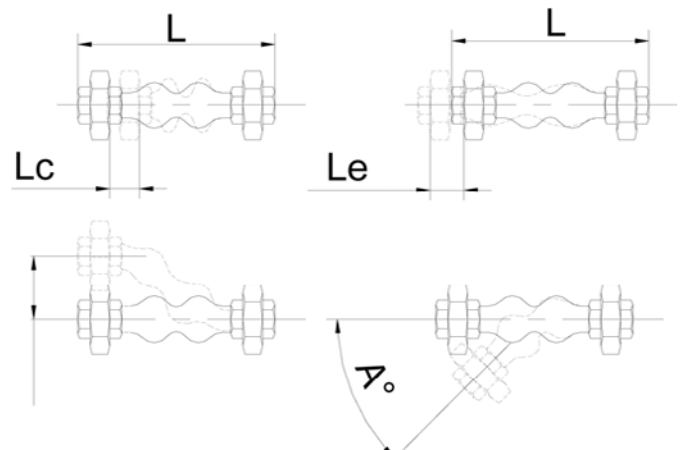
DN		L	Lc	Le	LI	A°	Weights (kg)
mm	inch						
15	1/2"	200	22	6	22	20°	0,52
20	3/4"	200	22	6	22	20°	0,78
25	1"	200	22	6	22	20°	1,30
32	1 1/4"	200	22	6	22	20°	1,51
40	1 1/2"	200	22	6	22	20°	2,10
50	2"	200	22	6	22	20°	2,71



### WORKING CONDITIONS



Lc : Axial compression.  
Le : Axial extension.  
LI : Lateral movement.



### STANDARDS

BSPT female threaded according to standard ISO 228-1.

