

FLANGED PRESSURE REDUCING VALVE PN 16

DP 1201

Ref. : DP 1201.pas

Rev. : Initial

Date : 31/01/2012



PA Ventil AB

GO WITH OUR FLOW

APPLICATION

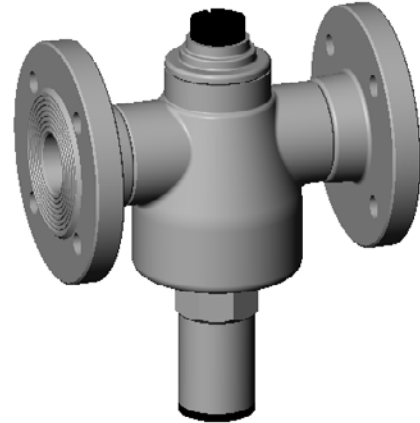
- General use : thermal system, sanitary, high pressure.

GENERAL CHARACTERISTICS

- From DN 15 to DN 100.
- PN 16.

CONSTRUCTION

7	2	Screwed flanges	Brass	DIN: CuZn39Pb2 ASTM: C37700 BS: CZ121
6	1	Cover	Brass	
5	1	Stem	Stainless steel	
4	1	Seat	Stainless steel	DIN: G-X6CrNi18 9 ASTM: Grade CF8 BS: 304 C15
3	3	Gasket	Nitril	
2	1	Bonnet	Brass	DIN: CuZn39Pb2 ASTM: C37700 BS: CZ121
1	1	Body	Brass	DIN: CuZn39Pb2 ASTM: C37700 BS: CZ121
Pos.	Qty.	Description	Material	



DIMENSIONS

DN		L	B	H
mm	inch			
15	1/2"	157	155	97
20	3/4"	161	155	97
25	1"	161	166	102
32	1" 1/4	188	220	153
40	1" 1/2	194	235	163
50	2"	202	235	163
65	2" 1/2	260	390	290
80	3"	276	390	290
100	4"	290	390	290

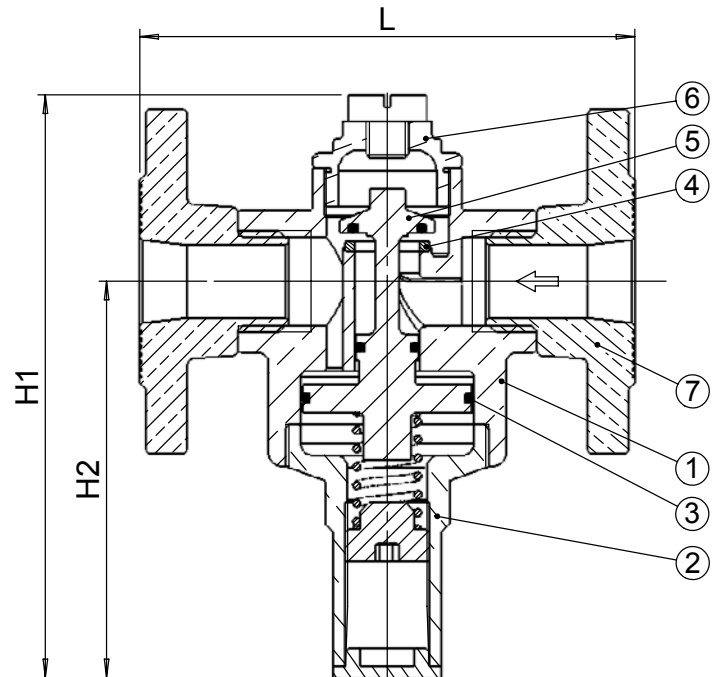
WORKING CONDITIONS

PS maxi : 16 bar.
T maxi : + 80°C.

Upstream pressure : 16 bar.
Downstream pressure : 0.5 - 4 bar.

Test procedures are established according to standards
EN 12266-1, DIN 3230, BS 5154 and ISO 5208 :

- Body : 24 bar.
- Seat : 17,6 bar.



STANDARDS

Flanges drilled according to EN 1092-2 : ISO PN16.

