

(NC) DIRECT ACTING BRASS SOLENOID VALVE

EV 1142

Ref. : EV 1142.pas

Rev. : D

Date : 17/12/2014



PA Ventil AB

GO WITH OUR FLOW

APPLICATION

General use : fluid network such as water, air, neutral gases, steam and fuel oil.

GENERAL CHARACTERISTICS

range : from DN 1/4" to DN 1/2"

Direct acting 2/2 solenoid.

Normally closed.

Standard tightness FPM.

Voltage:

Alternative (12 - 24 - 48 - 110 - 230 - 400 V)

Frequency (50Hz - 60Hz)

Direct current (12 - 24 - 48 - 110 V)

CONSTRUCTION

9	Nut	Zinc plated steel
8	Washer	Zinc plated steel
7	Coil	PBT + 30% glass fiber
6	Guiding tube	Stainless steel AISI 430
5	Spring	Stainless steel AISI 430
4	Movable core	Stainless steel AISI 303
3	Support	Stainless steel
2	Seal	FPM
1	Body	Brass EN CW 617 N
Pos.	Description	Material

DIMENSIONS

DN		A	B	C	D	weight (kg)
mm	inch					
10	1/4"	42	69	60	60	0,4
12	3/8"	47	73	60	62	0,45
15	1/2"	56	76	60	63	0,5

WORKING CONDITIONS

Maximum working pressure :

AC power:

DN 1/4" - 3/8" :15 bar.

DN1/2": 5 bar

DC power:

DN 1/4" - 3/8" :7 bar.

DN1/2": 3 bar

Maximum temperature : + 150°C.

Ambient temperature : -10°C / +80°C

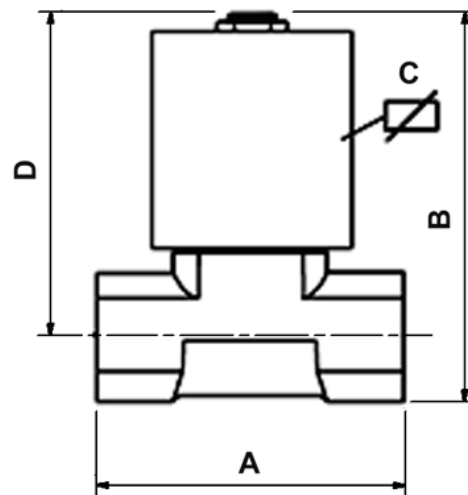
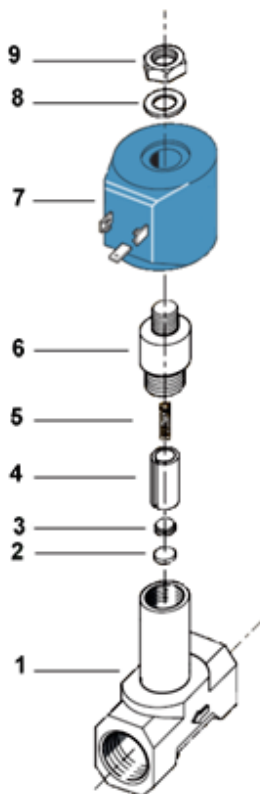
Note: The maximum differential pressure can be reduced in DC current whether the temperature is above 40°C

STANDARDS

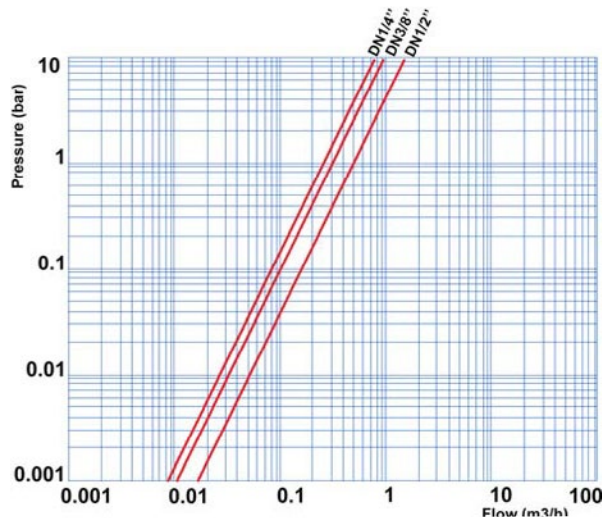
BSP threaded connection according to ISO 228.

Coil class F. 100% service.

Connection by the mean of connector T30.



Head losses diagrams



T41



The photographs and technical art works are not contractual. The specifications of the presented products are open to modifications without previous advice.