

# FLANGED TYPE "Y" STRAINER PN 16 F 3240-EP

Ref. : F 3240-EP.pas

Rev. : G

Date : 19/08/2015



PA Ventil AB

GO WITH OUR FLOW

## APPLICATION

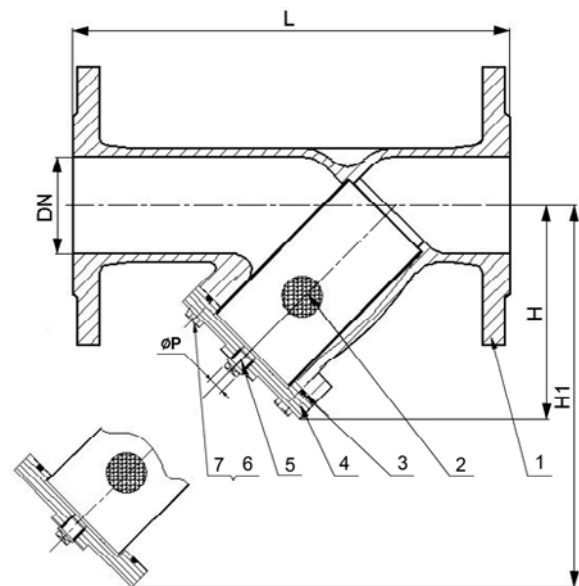
Waste water filtering systems.

## GENERAL CHARACTERISTICS

Cast iron "Y" body, cast iron bonnet.  
Dismountable stainless steel strainer.  
Flanged ends PN 16.

## CONSTRUCTION

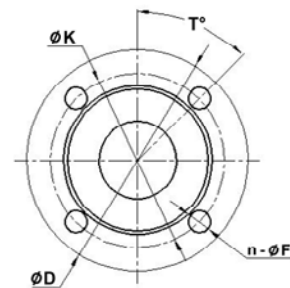
| 7    | 4    | Washer      | Stainless steel 304             |  |
|------|------|-------------|---------------------------------|--|
| 6    | 4    | Nut         | Stainless steel 304             |  |
| 5    | 1    | Drain plug  | Stainless steel 304             |  |
| 4    | 1    | Cover       | Cast iron<br>EN-GJL-250         | DIN: GG25<br>ASTM: A48 class 40B<br>BS: 1452 Grade 250         |
| 3    | 1    | Gasket      | EPDM CH                         |  |
| 2    | 1    | Strainer    | Stainless steel<br>X5CrNi 18-10 | DIN: X5CrNi18 10<br>ASTM: A 182 AISI 304<br>BS: 1449-2 304 S15 |
| 1    | 1    | Body        | Cast iron<br>EN-GJL-250         | DIN: GG25<br>ASTM: A48 class 40B<br>BS: 1452 Grade 250         |
| Pos. | Qty. | Description | Material                        |  |



## DIMENSIONS

| DN  | L    | H   | H1   | ØD  | ØK  | T°     | n  | ØF | ØP    | Kv (m3/h) | Weight (kg) | Mesh (mm) |
|-----|------|-----|------|-----|-----|--------|----|----|-------|-----------|-------------|-----------|
| 15  | 130  | 80  | 130  | 95  | 65  | 45°    | 4  | 14 | Rp1/4 | 1         | 2.3         | 1         |
| 20  | 150  | 91  | 146  | 105 | 75  | 45°    | 4  | 14 | Rp1/4 | 2.1       | 3.02        |           |
| 25  | 160  | 105 | 175  | 115 | 85  | 45°    | 4  | 14 | Rp1/2 | 4.2       | 3.59        |           |
| 32  | 180  | 124 | 210  | 140 | 100 | 45°    | 4  | 19 | Rp1/2 | 6.8       | 5.04        |           |
| 40  | 200  | 110 | 175  | 150 | 110 | 45°    | 4  | 19 | Rp1/2 | 10.7      | 6.30        |           |
| 50  | 230  | 117 | 192  | 165 | 125 | 45°    | 4  | 19 | Rp1/2 | 22.1      | 7.91        |           |
| 65  | 290  | 142 | 232  | 185 | 145 | 45°    | 4  | 19 | Rp1/2 | 54.2      | 11.5        |           |
| 80  | 310  | 163 | 265  | 200 | 160 | 22.5°  | 8  | 19 | Rp1/2 | 83.3      | 14.3        |           |
| 100 | 350  | 194 | 323  | 220 | 180 | 22.5°  | 8  | 19 | Rp1/2 | 130.2     | 17          |           |
| 125 | 400  | 248 | 402  | 250 | 210 | 22.5°  | 8  | 19 | Rp1/2 | 380       | 26.9        |           |
| 150 | 480  | 280 | 430  | 285 | 240 | 22.5°  | 8  | 23 | Rp3/4 | 547.1     | 41.9        |           |
| 200 | 600  | 346 | 560  | 340 | 295 | 15°    | 12 | 23 | Rp3/4 | 972.7     | 68          |           |
| 250 | 730  | 433 | 715  | 405 | 355 | 15°    | 12 | 28 | Rp3/4 | 1519.8    | 112         |           |
| 300 | 850  | 480 | 785  | 460 | 410 | 15°    | 12 | 28 | Rp3/4 | 2188.6    | 157         |           |
| 350 | 980  | 650 | 1100 | 520 | 470 | 11.25° | 16 | 28 | Rp3/4 | 2855.9    | 402         |           |
| 400 | 1100 | 854 | 1420 | 580 | 525 | 11.25° | 16 | 31 | Rp3/4 | 3730.1    | 633         |           |

Kv given for water with velocity 4.9 m/s



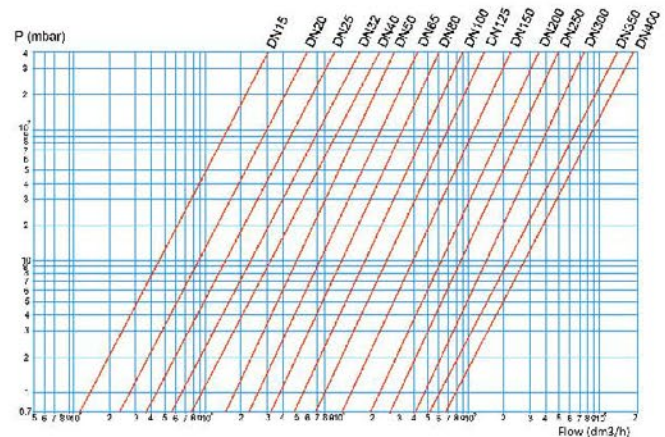
## WORKING CONDITIONS

Maximum working pressure :16 bar  
Maximum working temperature: -15°C / 140°C

## STANDARDS

Pressure test according to standards  
EN 12266-1, DIN 3230, BS 5154 and ISO 5208 :  
Body : 24 bar.

Face to face according to standards EN 558-1  
serie 1 and DIN 3202/1 serie F1.  
Flanges drilled according to EN 1092-2 PN16.



The photographs and technical art works are not contractual. The specifications of the presented products are open to modifications without previous advice.