

SKB2 TYPE STAINLESS STEEL SIGHT GLASS PN 16 FRA BD FT2245-SKB2

Ref. : FRA_BD_FT2245-
SKB2



PA Ventil AB

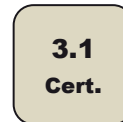
GO WITH OUR FLOW

CHARACTERISTICS

The SKB2 PN16 sight glass is dedicated to the direct visual control of fluid flow in the pipes. Its stainless steel construction makes it suitable for applications in chemical processes fluid flow and its double-window construction with a moving flapper permits to have a better visual control of the flow. This sight glass complies with the EC and ATEX standards.

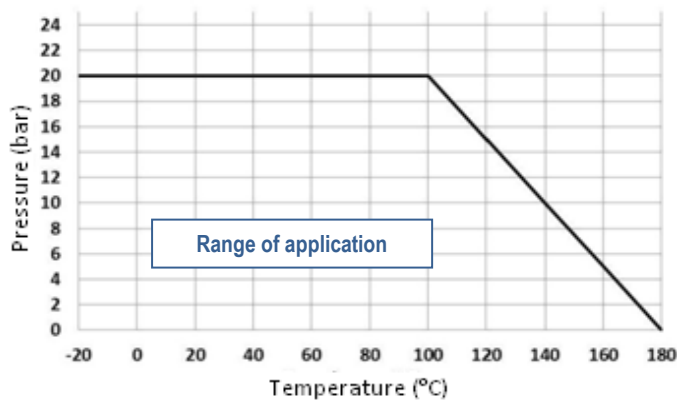
AVAILABLE ITEMS

DN 15 to DN 150
EN12092-1 PN 16 flanged connections



LIMITS OF USE

Max. allowable pressure (PS)	16 bar
Min./max. allowable temperature (TS)	-20 °C / +180 °C
Room temperature	-20 °C / +60 °C



DIRECTIVES AND DEVELOPMENT STANDARDS APPLICABLE

	Standard	Notified bodies		Standard
97/23/EC Pressure Equipment Directive	DN 15 to 25 : excluded		Shell design	EN 12516-1
	DN 32 to 200 : category II	TÜV #0035	Material certificate	EN 10204 § 3.1
Alloy grade	EN 1503-1		Face-to-face dimensions	EN 558-1 - series 1
ATEX Directive	EN 13463-1	SIRA #0518	Room temperature -20 °C / +60 °C	Category II 2 G D TX



SKB2 TYPE STAINLESS STEEL SIGHT GLASS PN 16 FRA BD FT2245-SKB2

Ref. : FRA_BD_FT2245-
SKB2

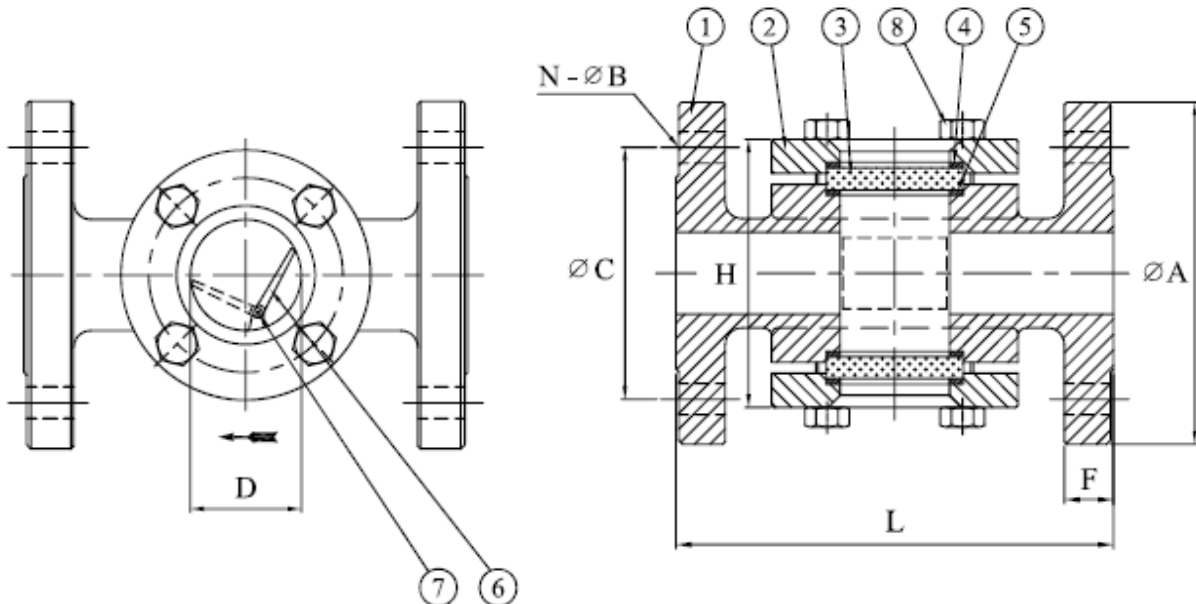


PA Ventil AB

GO WITH OUR FLOW

CONSTRUCTION

#	Item	Quantity	Material
1	Body	1	Stainless steel A351 CF8M / 1.4408
2	Caps	2	Stainless steel A351 CF8M / 1.4408
3	Glass	2	Tempered glass
4	Flat gasket	2	PTFE
5	Flat gasket	2	PTFE
6	Flapper	1	Stainless steel A351 CF8M / 1.4408
7	Stem	1	Stainless steel AISI 304
8	Screw	8	Stainless steel AISI 316



DIMENSIONS (mm) AND WEIGHT (kg)

DN	15	20	25	32	40	50	65	80	100	125	150	200
A	95	105	115	140	150	165	185	200	220	250	285	340
N - Ø B	4 - 14	4 - 14	4 - 14	4 - 18	4 - 18	4 - 18	4 - 18	8 - 18	8 - 18	8 - 18	8 - 22	12 - 22
Ø C	65	75	85	100	110	125	145	160	180	210	240	295
D	40	40	40	50	50	50	85	85	110	130	160	160
F	14	16	16	16	16	18	18	20	20	22	22	22
H	79	85	85	111	119	131	157	167	195	225	247	315
L	130	150	160	180	200	230	290	310	350	400	480	600
Weight	2.3	3.2	3.7	6.2	7.12	8.4	17	18.7	23.7	34	52	75



MOUNTING AND MAINTENANCE

- The sight glass can be installed in any position. In vertical position with flow down, the flapper will not function.
- Downstream from the steam trap, please keep a 1 metre distance between the steam trap and the sight glass in order to prevent from thermal shock on the glass.
- Please shut off the up and downstream pipes before installation.
- Depressurize and drain the piping.
- Please wait for its cooling to room temperature.
- Wear the necessary safety equipment for this type of intervention (gloves and glasses).
- Remove the cover and glass.
- Clean the internal parts.
- Check the glass condition in order to detect any possible corrosion or erosion mechanism and replace it if necessary.
- Screw the sight glass flanges on the pipes flanges using the appropriate gaskets, bolts and nuts.
- Position the device so that glasses can be easily checked by operators.
- Put the device back to operation.

ATEX ZONE USE

The SKB2 sight glass complies with the EC-ATEX Directive and is certified for use in explosive zones. It can be installed in zones 1, 2, 21 and 22.



SPARE PARTS

It is a kit including 1 glass and 2 gaskets.

DN	Ø glass (mm)	Thickness (mm)	Reference
15-20-25	50	10	981077A
32-40-50	63	10	981078A
65-80	100	12	981079A
100	130	15	981080A
125	150	19	981082A
150	180	19	981082A
200	180	19	981082A