

DOUBLE EXCENTRIC TYPE BUTTERFLY VALVE WITH ELECTRIC ACTUATOR AUMA

VP 4201-U04

Ref. : VP 4201-U04.pas

Rev. : F

Date : 03/11/2014



PA Ventil AB

GO WITH OUR FLOW

APPLICATION

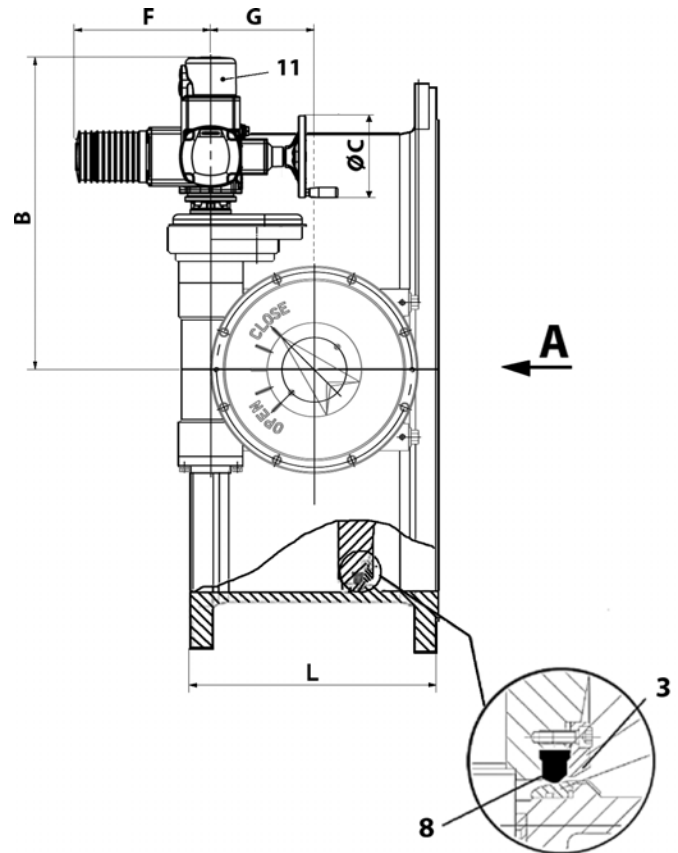
General use : potable water.

GENERAL CHARACTERISTICS

TECWAT type : long pattern.
 Design in according to EN 593.
 Range : from DN 100 to DN 2000.
 Assembling with preferential sense
 Bi-directional on demand.
 Double excentric type.
 Replaceable seat, no wrenkling possibility.
 Food epoxy painting.

CONSTRUCTION

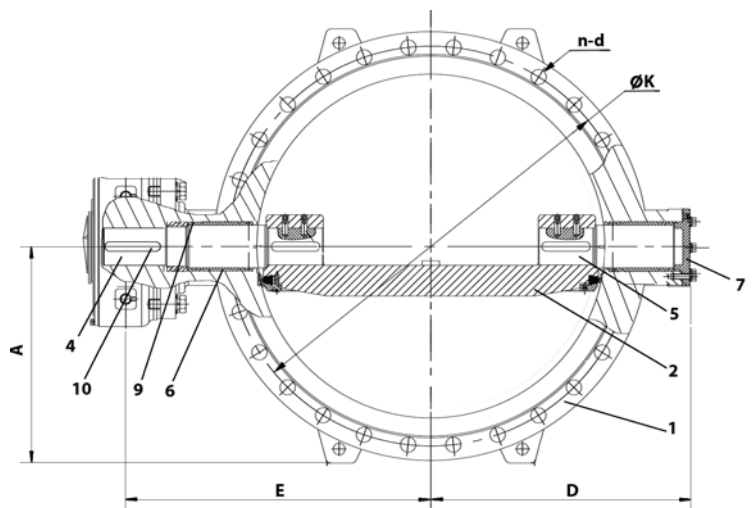
11	1	Electric actuator		AUMA
10	2	Key	Stainless steel X20Cr13	DIN: 1.4021 ASTM: AISI 420 BS: 420 S 37
9	2	O-ring	EPDM	
8	1	Sealing ring	EPDM	
7	1	Cover free end	Ductile iron EN-GJS-500-7	DIN: GGG 50 ASTM: A536 70-50-05 BS: 1563 EN-JS1050
6	2	Bearing bush	Al-Bronze	
5	1	Shaft free end	Stainless steel X20Cr13	DIN: 1.4021 ASTM: AISI 420 BS: 420 S 37
4	1	Shaft driven end	Stainless steel X20Cr13	DIN: 1.4021 ASTM: AISI 420 BS: 420 S 37
3	1	Retaining ring	Steel	
2	1	Disc	Ductile iron EN-GJS-500-7	DIN: GGG 50 ASTM: A536 70-50-05 BS: 1563 EN-JS1050
1	1	Body	Ductile iron EN-GJS-500-7	DIN: GGG 50 ASTM: A536 70-50-05 BS: 1563 EN-JS1050
Rep.	Nb.	Designation	Material	



VIEW A

DIMENSIONS

DN	L	A	B	ØC	D	ØK	E	n-d	Actuator type	Weight (kg)	
mm	inch										
100	4"	190	117	388	160	133	180	284	8-ø19	SA07.2	50
150	6"	210	147.5	388	160	164	240	315	8-ø23	SA07.2	55
200	8"	230	175	410	160	198	295	392	8-ø23	SA07.2	71
250	10"	250	202.5	410	160	219	350	413	12-ø23	SA07.6	86
300	12"	270	227.5	453	200	254	400	511	12-ø23	SA07.6	123
350	14"	290	257.5	453	200	279	460	536	16-ø23	SA10.2	149
400	16"	310	287.5	465	200	320	515	632	16-ø28	SA10.2	207
450	18"	330	312.5	465	200	359	565	662	20-ø28	SA14.2	238
500	20"	350	340	591,5	200	393	620	713	20-ø28	SA07.6	290
600	24"	390	395	588,5	200	450	725	780	20-ø31	SA10.2	423
700	28"	430	452.5	588,5	200	530	840	798	24-ø31	SA10.2	585
800	32"	470	512.5	619,5	200	614	950	891	24-ø34	SA10.2	809
900	36"	510	562.5	679,5	315	675	1050	950	28-ø34	SA10.2	1083
1000	40"	550	620	663	200	748	1160	1039	28-ø37	SA10.2	1412
1200	48"	630	732.5	722,5	200	865	1380	1181	32-ø41	SA10.2	2047
1400	56"	710	842.5	775	200	1015	1590	1338	36-ø44	SA10.2	3059
1600	64"	790	962.5	835	315	1161	1820	1463	40-ø50	SA10.2	3812
1800	72"	870	1062.5	875	200	1324	2020	1712	44-ø50	SA10.2	5381
2000	80"	950	1167.5	935	315	1437	2230	1817	48-ø50	SA14.2	7433



WORKING CONDITIONS

Maximum working pressure : 10 bar.
 Maximum temperature : + 80 °C.

STANDARDS

Design according to EN 593.
 Test procedures are established according to standards EN 12266-1 and API 598.
 Face to face according to standard EN 558-1 serie 14.
 Connections according to standard EN 1092-2 ISO PN10.
 Optional certificat of health conformity (ACS) by request.



The photographs and technical art works are not contractual. The specifications of the presented products are open to modifications without previous advice.