

DOUBLE EXCENTRIC TYPE BUTTERFLY VALVE WITH GEAR BOX TECWAT PN40

VP 4260-08

Ref. : VP 4260-08.pas

Rev. : A

Date : 22/11/2011



PA Ventil AB

GO WITH OUR FLOW

APPLICATION

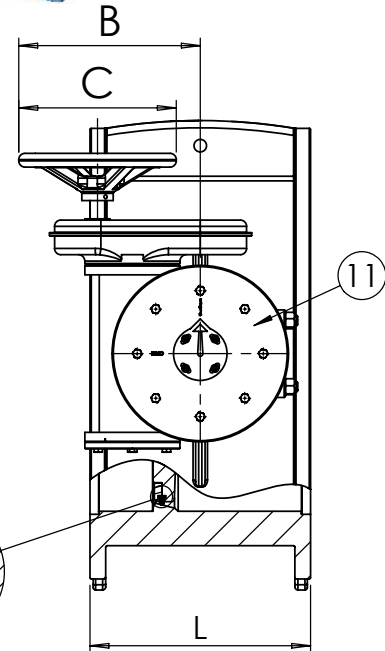
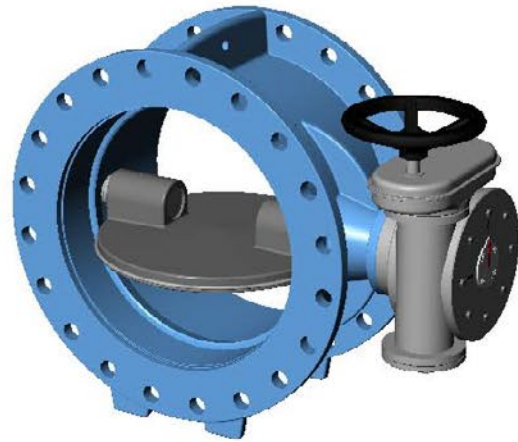
General use : potable water, sea water...

GENERAL CHARACTERISTICS

TECWAT type : long pattern.
 Design in according to EN 593.
 Range : from DN 200 to DN 1000.
 Assembling with preferential sense
 Bi-directional on demand.
 Double excentric type.
 Replaceable seat, no wrenkling possibility.
 Food epoxy painting.

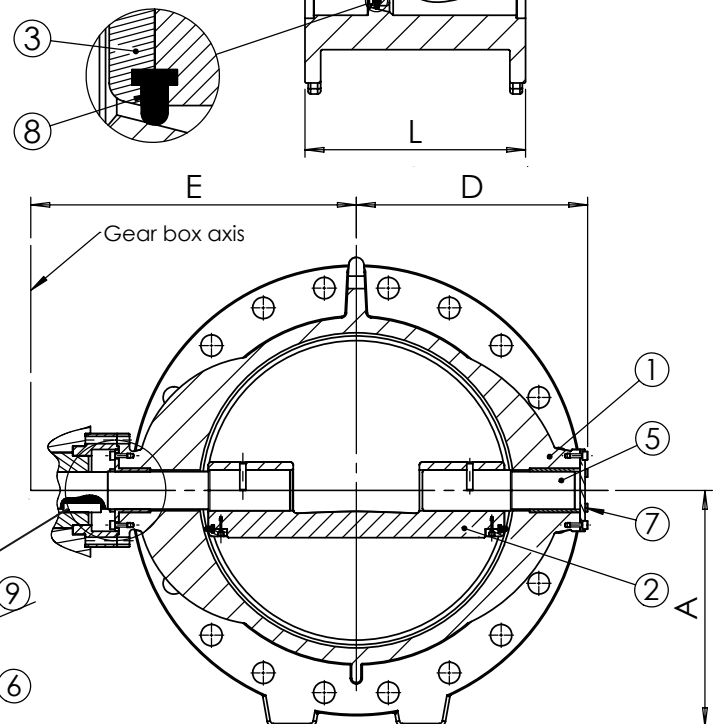
CONSTRUCTION

11	1	Gearbox		
10	2	Key	Steel Ck45	
9	2	O-ring	EPDM	
8	1	Sealing ring	EPDM	
7	1	Cover free end	Ductile iron EN-GJS-400-15	DIN: GGG 40 ASTM: A536 65-45-12 BS: 1563 EN-JS1030
6	2	Bearing bush	Bronze + DELRIN	
5	1	Shaft free end	Stainless steel X20Cr13	DIN: 1.4021 ASTM: AISI 420 BS: 420 S 37
4	1	Shaft driven end	Stainless steel X20Cr13	DIN: 1.4021 ASTM: AISI 420 BS: 420 S 37
3	1	Retaining ring	Steel S235JR	
2	1	Disc	Ductile iron EN-GJS-400-15	DIN: GGG 40 ASTM: A536 65-45-12 BS: 1563 EN-JS1030
1	1	Body	Ductile iron EN-GJS-400-15	DIN: GGG 40 ASTM: A536 65-45-12 BS: 1563 EN-JS1030
Rep.	Nb.	Designation	Material	



DIMENSIONS

DN		L	A	B	C	D	E	Weight (kg)
mm	inch							
200	8"	230	198	217,5	245	193	389	119
250	10"	250	235	295	245	259	394	188
300	12"	270	268	295	370	271	425	210
350	14"	290	300	341	370	311	446	296
400	16"	310	340	341	370	340	511	372
450	18"	330	353	341	370	380	531	490
500	20"	350	388	375	370	385	577	553
600	24"	390	455	375	370	459	643	740
700	28"	430	508	427	370	533	692	1079
800	32"	470	580	427	485	588	825	1828
900	36"	510	645	532,5	485	677	871	2182
1000	40"	550	695	532,5	485	734	945	2530



WORKING CONDITIONS

Maximum working pressure : 40 bar.
 Maximum temperature : + 80 °C.

STANDARDS

Design according to EN 593.
 Test procedures are established according to standards EN 12266-1 and API 598.
 Face to face according to standard EN 558-1 serie 14.
 Connections according to standard EN 1092-2 ISO PN40.

