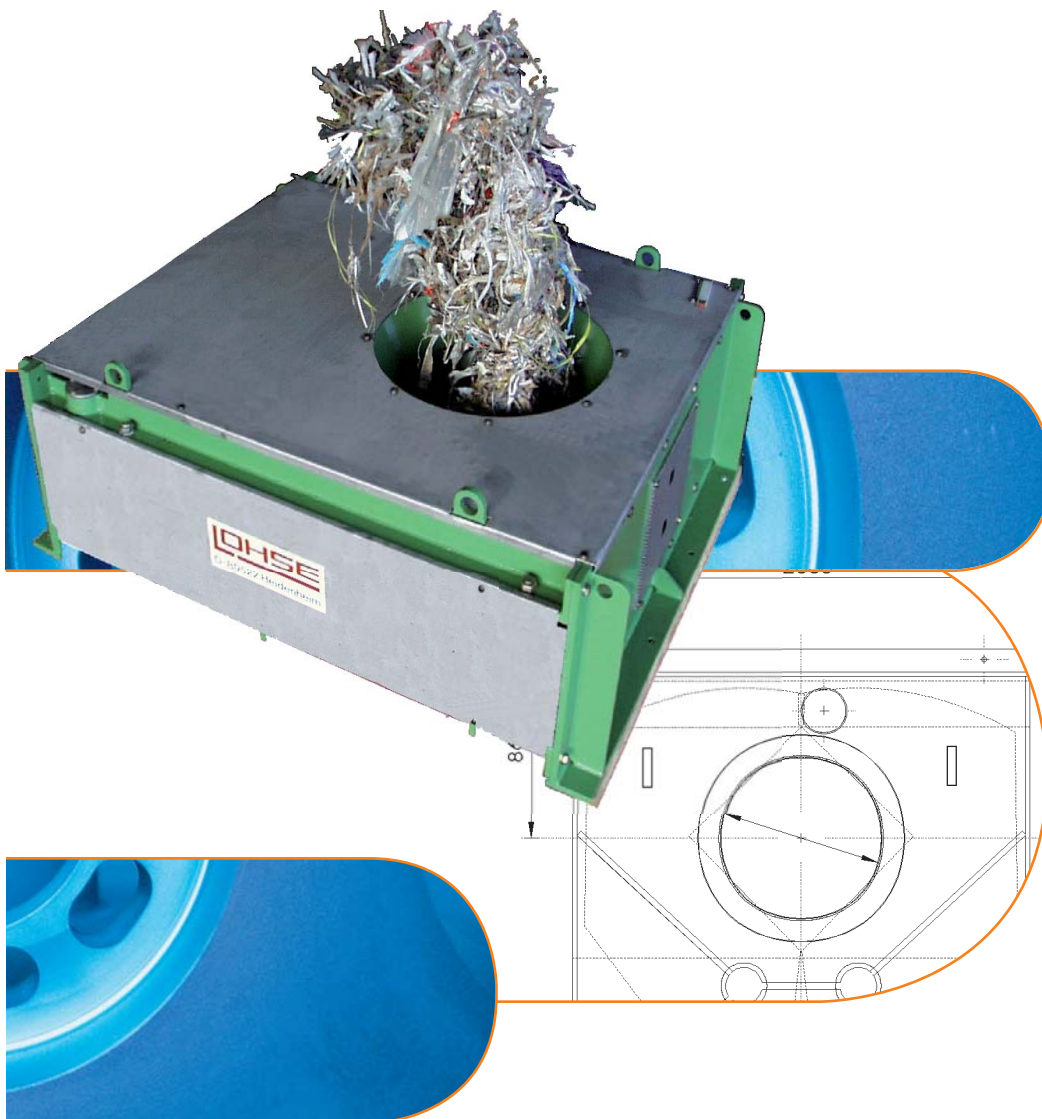


Mechanical Engineering

Rope Cutters



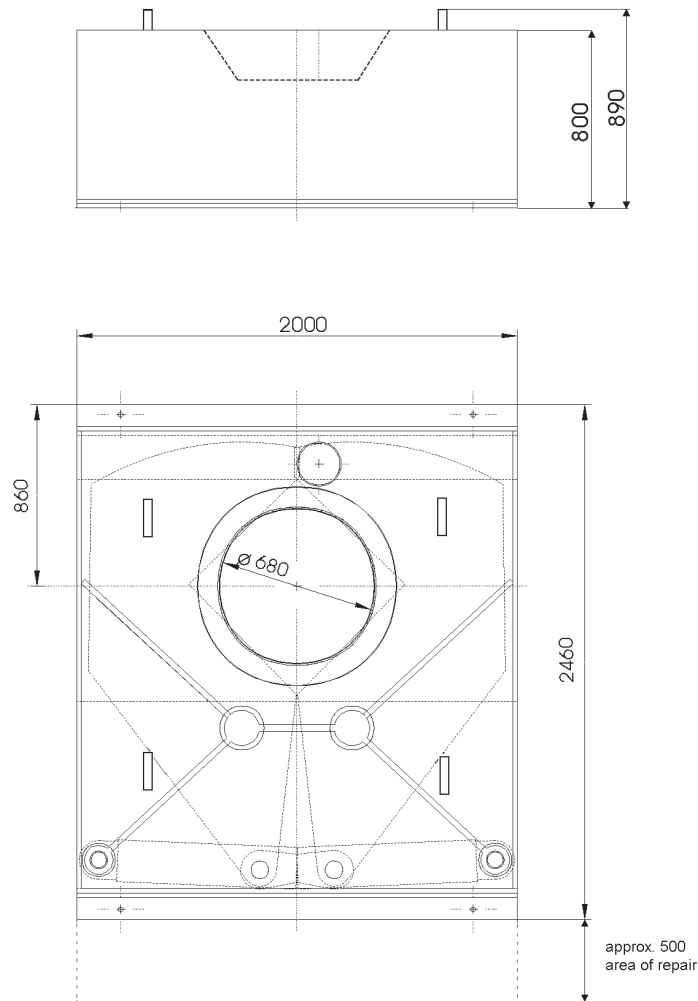
Maschinenbau Lohse GmbH
Unteres Paradies 63 · 89522 Heidenheim
Postfach 1565 · 89505 Heidenheim
phone +49(0)7321 / 755-79 · fax +49(0)7321 / 755-93
server.mb@lohse-gmbh.de ·
www.lohse-gmbh.de

The suspension that rotates on the pulping process in the waste paper pulper spins the contrary material that came in with the waste paper, such as, e.g. wires, films, plastic and insoluble paper, into a rope. This rope is drawn out of the waste paper pulper with a rope winch. The rope winch is driven with a suitably variable interval switching. Depending on the amount of contrary material in the waste paper to be processed, and on the size of the pulper, endless ropes with a diameter of between 150 mm and 500 mm are formed. For disposal purposes these ropes must be cut into transportable pieces. This is done with a Lohse rope cutter, which is installed behind the rope winch in such way that the rope emerging from the winch is led without force via a funnel into the cutting opening. Lengths vary between 300 mm and 3000 mm, depending on customers' wishes.

The rope cutter consists of two cutter bars with four integrated reversing scissor blades, which are moved in the opposite direction to the middle of the scissors by means of a hydraulic cylinder. The rope is cut through without interrupting production and without an increased risk of accident.

The hydraulic cylinders are operated and the cutting procedure is controlled with an external hydraulic unit coordinated to the rope cutter. Manual or automatic mode can be selected with a preselection switch. In manual mode the cutting procedure can be initiated at any time by pressing a switch at the switch-gear cabinet. Automatic mode is possible if the controller is integrated correspondingly with the waste paper pulper operations. If the waste paper pulper is switched off during a cutting procedure, this is carried out and the cutter bar then returns to the starting position.

Lohse rope cutters DW 700 - for a rope diameter up to 650 mm



Technical data

size		DW 700
cut opening	[mm]	700 x 700
hopper opening	[mm]	$\varnothing 680$
cutting force	[kN]	ca. 500
cutting time	[sec.]	ca. 130
cutting intervals (depending on ragger speed)		adjustable by timer
hydraulic driver motor	[kW]	5,5
hydraulic pressure max.	[bar]	220
width	[mm]	2000
height	[mm]	890
length	[mm]	2460
weight	[kg]	ca. 4800